

bcevents.ae

PRODUCTS CATALOGUE



Business Center 1, M Floor,
The Meydan Hotel, Nad Al Sheba, Dubai, U.A.E

PRODUCT CATALOG

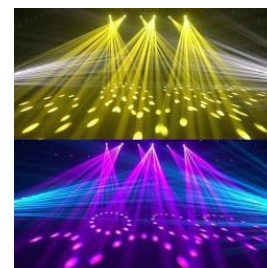
“
ILLUMINATING
YOUR VISION
WITH PRECISION





230W BEAM MOVINGHEAD LIGHT

Input voltage: AC100-240V; 50/60Hz Power consumption: 230W Lamp beads quantity: 230W OSRAM projection lampControl signal: DMX512, master and slave, voice control Or self-propelled proceduresControl channels: 16 international standard DMX channels weight: 19.5kgProduct Size: 400 x 330 x 485mmPacking size: 440(D) 410 (W) x 540 (H) mm



250W BEAM MOVINGHEAD LIGHT

Voltage: AC100-240V, 50/60Hz Power:250WColor: a color wheel, each color wheel consists of 14 color chips + white, rotation speed Adjustable, two-way water effect and rainbow effectPattern: 1 fixed pattern plate, 17 pattern effects + white light + 3 glass patternsPrism: 1 56 honeycomb prism, 1 16 prism, double prism can be superimposed and can be rotated independently in both directionsTurn bidirectional rotation, the rotation speed is adjustable Channels: 16 channelsControl mode: DMX512/DMX/self-propelled Dimming: 0- 100%Focusing: Linear focusing, from near to far Product size: 300 x 238 x 585mmNet weight: 16kg



350W BEAM MOVINGHEAD LIGHT

Voltage: AC100V-240V, 50-60HzLamp:Yodn 350W Rated Power: 500WPan: 540 ° (16Bit scanning accuracy) Tilt: 270 ° (16Bit scanning accuracy) Color wheel: 14 dichroic filters+open Static gobo wheel: 13 gobos+openPrism: 1 pcs 24 facet prism+1pcs 8 facet prism with three layers Strobe: Double and pole strobe maximum reaches 13 times per second .random strobe and pulse strobe optionalDimmer: 0%-100% linear dimmer Foggy: Linear foggyIP rate: IP20 high efficiency switch power supply Other function: Lamp on/off function and reset through controller. Auto-run, Master/slave, Sound active modePacking Size: 455 x 455 x 600mm Gross Weight: 21.6KG



380W BEAM 3IN1 BSW MOVINGHEAD LIGHT

Voltage: AC110-240V, 50/60Hz Power: 600WLight Source: OSRAM 380W Channel mode: 16/20/24CH-Display: 2.8-inch touch screen, can be reversed 180 ° Color plate: 11 color film + whiteFixed pattern plate: 17 patterns + whiteRotating pattern disk: 9 removable patterns + whiteRotating pattern piece diameter: 14.9mm, effective diameter: 10mm Prism: 8 prism + straight 4 prism + fixed 16 prism,Fixed and rotating prism can be superimposed, atomization function; The light angle: 2.5 ~ 39 ° ;Level: 540 ° , the resolution of 8 / 16Bit; Vertical: 270 ° , resolution 8 / 16Bit;IP protection class: Ip20;



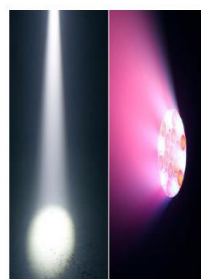
WATERPROOF 350W BEAM MOVING HEAD LIGHT

Light source: 350W bulb Rated life: 1500 hours Color temperature: 8000K
Focusing: Using high precision glass lens, electronic linear high definition focusing Angle: 1.7°Electrical parameterInput voltage: AC 100V-240V 50/60Hz Rated power: 500WSignal interface: 3-core XLR waterproof signal socket input/output Power interface: waterproof power socket effect Horizontal/vertical: horizontal scanning Angle 540°, vertical scanning Angle 270°, automatic return correction and 16Bit precision fine-tuning functionStroboscopic: Fast stroboscopic 1-20Hz per second, with pulse stroboscopic, synchronous asynchronous stroboscopic effect
Dimming: Smooth dimming without flickerPrism: 1 independent rotating prism, can be independently bidirectional rotation of the beam effect
Color plate: Color plate 13+1 color temperature plate available 2500K/3200KFixed pattern plate: 14+1 can be two-way shaking, two-way water effect Focus: 0-100% linear electric focus-Physical/installation features
Net weight: 23Kg
Protection class: IP65 Dimensions: 350*298*681mm



WATERPROOF 480W BEAM MOVINGHEAD LIGHT

Light source: OSram 461W bulb Rated life: 1500 hours
Color temperature: 7500K
Electrical parameterInput voltage: AC 100V-240V 50/60Hz Rated power: 650W
Signal interface: 3-core XLR waterproof signal socket input/output Power interface: waterproof power socketeffectHorizontal/vertical: horizontal scanning Angle 540°, vertical scanning Angle 270°, automatic return correction and 16Bit precision fine-tuning function
Stroboscopic: Fast stroboscopic 1-20Hz per second, with pulse stroboscopic, synchronous asynchronous stroboscopic effect
Dimming: Smooth dimming without flickerPrism 1:1 octa prism, can be independently bidirectional rotation and superposition to create a richer beam effect Prism 2:1 sixteen prisms, can be independently bidirectional rotation and superposition to create a richer beam effectColor plate: Color plate 13+1 color temperature plate available 2500K/3200K Fixed pattern plate: 14+1 can be two-way shaking, two-way water effect Focus: 0-100% linear electric focusPhysical/installation features
Net weight: 25Kg
Protection class: IP54
Dimensions: 425*395*625mm



19LAMP 15W WASH LIGHT

Operating voltage: AC100V-AC240V, 50/60Hz;
Rated power: 350W;
Light source: 19 15W 4-in-1 LED;
Display: digital display;
Control channels: 16/24 standard DMX channels;
Operation mode: master-slave, voice control, self-walking,
DMX512; Horizontal scanning Angle: 540 degrees;
Vertical scanning Angle: 270 degrees;
Optical lens Angle: 25 degrees;
Dimming mode: 0-100% electronic dimming;
Stroboscopic function: 1-25 times/SEC high-speed stroboscopic;
Inner package size: 42*27*37mm (carton);
Outsourcing size: 56*47*39
Net weight: 11KG;
Gross weight: 13KG.



36LAMP ZOOM WASH LIGHT

Input Voltage: AC100-240V,50-60Hz
Power Consumption: 540WLED
Quantity: 36pcs 15W 6IN1 LED
Zoom Angle: 10° to 60°
Control Signal: DMX512, master-slave, Sound,Auto
Control Channel: 13/18 DMX512 channel N.W: 10.5 KGG.W: 12.8 KG
Product size:340 x 230 x 470mm
Packing Size:420(D) x 300(W) x 390(H)mm



37LAMP 15W ZOOM WASH LIGHT

Power consumption: 500WOperating voltage: AC100-240V, 50/60HzLight source: 37pcs*15W Osram RGBW 4in1 LED Lamp life: 100,000 hoursColor temperature: 2700-8000K adjustable Zoom Angle: 5°-40°Color mixing: RGBW, a variety of color mixing Work place: any safe indoor locationGating: Multiple gating modes, 32 times/secondDisplay mode: LCD, English and Chinese are available, display operation is simple DMX512 channel: 24/48 channel
Dimming grade: 0-100% perfect linear dimming system XY:540°/270°, automatic accurate positioning Wash + Zoom 2in1 functionProtection class: IP20, indoor use
Control mode: DMX512, master-slave, automatic operation, sound controlStructure: high temperature flame retardant engineering plastic + die-cast aluminum body
Packing size: 49*36*46Weight: 16KG Package: 1 pack 1



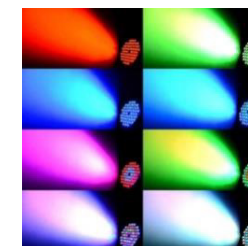
19LAMP 40W WASH LIGHT

Power supply: AC100V-240V50-60Hz
Maximum power: 1000WLight source: 19 40W 4-in-1 OSRAM LED lamp lamp belt: 5050RGB74PCS0.12W magic side light lamp with color temperature: 2800K-8500K lamp life: 50,000 hours
Display: Color screen stroboscopic: 1-25 times/SEC spot Angle: 0-60°Dimming: 0-100% linear electronic dimming
Control mode: DMX512, voice control, self-walking, master-slave channel mode: 24/26/38/81/95/100/102CH
Function Effect: with CTO, dyeing, light beam,Effect modes (Vortex, Kaleidoscope)
Front mirror plate variable polar rotation, seamless splicing mirror plate, aspherical lens structure, lamp bead single point control lamp with effect stroboscopic, horse running effect, with built-in program
Package size: 580x550x375mm Gross weight: 20kg



19LAMP 15W ZOOM WASH LIGHT

Voltage: AC 100V ~240V 50-60Hz
Power: 450WLED Source: 19 x 15W high power RGBW 4 in 1 LEDs Zoom: 4-60°
Strobe: 0-20 time / Second
Control Mode: DMX512,Sound-actived, Master/slave DMX Channels: 21 CH/ 23CH/ 35OH/ 78CH/ 92CH/ 97CH/ 99CH
Dimmer: 0-100% linear dimmer Pan: 540° +16bit fineTilt: 270° +16bit fine
Display: LCD colorful display .
Chinese or English exchange Fixture dimension: 415 x 275 x 425 mm
Carton package Size: 53 x 42 x 51cm (1 pcs/ctn) N.W:15.0 kg G.W:18.0kg



9W 54 LEDs LAMP PAR LIGHT

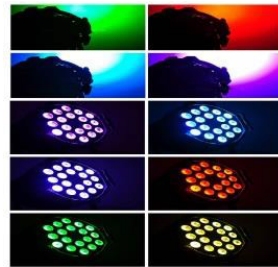
Voltage: AC100-240V 50/60Hz
Lamp power: 54pcs 9W LED, 3 in 1 RGBW Digital display, color effect Operation mode: auto movement, DMX512,inaster-slave 7 channel Lens angle: 25 ° Material: aluminum alloy N.W: 3.6kg G.W: 4kg
Inner package size: 255 x 255 x 390mm
Outer package size: 800 x 550 x 430mm



12W 24 LEDs LAMP PAR LIGHT

Voltage: AC 100- 240V 50/ 60Hz Maximum power: 250WBeam divergence angle: 25 ° DMX channel: 3/7 channelLight source: 24x10W/15W (4in1,5in1)Control mode: DMX, automatic operation Operating mode: master and slave synchronization, stand-alone self-propelled, voice-activatedLamp housing material: die-cast aluminum N.W: 5kg G.W: 6kgLamp body size: 220 x 220 x 340mm

18LAMP 20W PAR LIGHT



Voltage: AC100-240V 50-60Hz
Lamp power: 18pcs 10W LED Violet (4 in 1)
Power consumption: 180W
Operation mode: DMX512, master-slave, auto movement, sound control
Control system: DMX512
Cover material: aluminum alloy
DMX channel: /channels
Optical angle: 25°
3 pin XLR connector
Inner package N.W: 3kg
G.W: 3.5kg
Size: 255 x 255 x 390mm (1 pcs)

3W 54LAMP WATERPROOF PAR LIGHT



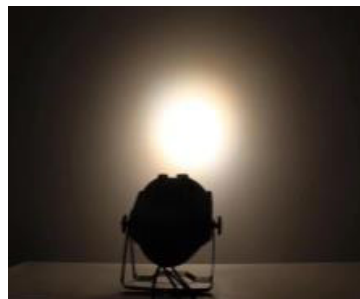
Voltage: AC100-240V 50/60Hz
Lamp power: 54pcs 3W LED, RGBW Digital display, color mixing excellent
Operation mode: auto movement, sound control, master-slave, DMX512 27 channel
Lens angle: 25°
Material: aluminum alloy
Waterproof grade: IP50
N.W: 8kg
G.W: 10kg
Product size: 290 x 280 x 350mm
Package size: 310 x 310 x 350mm

12W 24LAMP WATERPROOF PAR LIGHT



Input Voltage: AC100-240V, 50-60Hz
Power Consumption: 216W
LED Quantity: 24pcs 12W 4IN1 LED
Control Signal: DMX512, Master-slave, Sound, Auto mode
Control Channel: 5/9 DMX512 channels
Waterproof Grade: IP65
N.W: 10.2 KG
G.W: 11.8 KG
Product Dimensions: 295 x 215 x 290mm
Packing Size: 310(L) x 310(W) x 355(H)mm
Outer Box Size: 650(L) x 650(W) x 380(H)mm

12W 24LAMP WATERPROOF PAR LIGHT



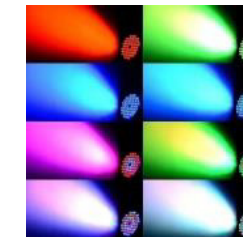
Voltage: AC100-240V 50HZ/60HZ
Power: 200W
Light source: 4*50w Cree lamp beads
Luminous color: 3200k two / 6500k two
Color temperature: 3200-6500k
Luminous angle: 15.24.36° optional.
Control mode: DMX / master / slave / self-pro
Channel: 8CH
Housing: cast aluminum
Packing size: 25*25*36cm
Net weight: 4.5kg

LED 4EYED WATERPROOF PAR LIGHT



Voltage: AC 100V-240V Frequency: 50Hz-60Hz
Light source: 4 * 50W COB (imported Cree light beads)
Color temperature: warm white 3200K, white 6500K (white + warm white, two in one optional)
Total power: 250W
Light source life: 100,000 hours
Dimming: 0%~100%
Power: 250W
Beam angle: 18 degrees / 25 degrees Optional (default 25 degrees)
Working temperature: -25 °C ~ +35 °C
Control mode: DMX512, self-propelled, master-slave, voice control
Channel: 8 DMX channels

3W 18LAMP PAR LIGHT



Voltage: AC100V-240V 50-60Hz
Power: 30W
Lamp bead: 18pcs 3W LED lamp bead
Operation mode: the mode, DMX - 512
Voice control mode: Lord, stroboscopic
Lamp colors: red, green and blue
Mode: DMX512, self-propelled, voice-activated
Dimensions: 170 * 107 * 235 mm
Weight: 1.2kg
LCD LCD display, DMX 3-pin or 5-pin signal input

4LED WIRELESS BATTERY PAR LIGHT

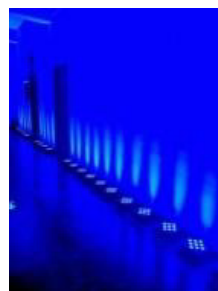


Input Voltage: AC100-240V, 50-60Hz
Power Consumption: 60W/72W
LED Quantity: 4pcs 5IN1/6IN1 LEDs, 4PCS 15W 5IN1 LEDs, 4PCS 18W 6IN1 LEDs, 25° specific optical system
50,000 hours lifespan, low power consumption
Color mixing effect; LED shutter effect, adjustable speed 0-100% smooth linear dimming
Product Dimensions: 170*140*200mm
Packing Size: 200(D)*175(W)*270(H)mm

6LED WIRELESS BATTERY PAR LIGHT



Input Voltage: AC100-240V, 50-60Hz
Power Consumption: 60W/72W
LED Quantity: 6PCS 5IN1/6IN1 LEDs, 4PCS 15W 5IN1 LEDs, 4PCS 18W 6IN1 LEDs, 25° specific optical system
50,000 hours lifespan, low power consumption
Color mixing effect; LED shutter effect, adjustable speed 0-100% smooth linear dimming
Control Channel: 5/9CH, 6/10CH DMX channels
NW: 2.5 KG
GW: 3.2 KG
Product Dimensions: 170*140*200mm
Packing Size: 200(D)*175(W)*270(H)mm



9LED WIRELESS BATTERY PAR LIGHT

Input Voltage: AC100-240V,50-60Hz
 Power Consumption: 90W, 135W, 162WLED
 Quantity: 9PCS 4IN1/5IN1/6IN1 LEDs
 Control Signal: DMX512,
 Master-slave, Sound, Auto mode
 Control Channel: 4/8CH,5/9CH,6/10CH DMX
 channels NW: 3.6 KG GW: 4.2 KG
 Product Dimensions:265*110*245mm
 Packing Size: 280(D)*155(W)*280(H)mm
 Outer box Size: 590(D)*505(W)*305 (H)mm



AUTO LIGHT

Technical Parameters
 Power supply: AC90-260V 50-60Hz
 Power consumption: 350W
 LED: (1) 31pcs 10W White LED
 Control mode: DMX512, automatic sound control
 mode
 IP rating: IP20Size: 280 x 280 x 380mm
 Net weight: 7KG
 Total weight: 9KG



100W WARM WHITE LED COB LIGHT

Source: 100W LED lamp beads
 Total power: 150W
 Lens angle: 35° , 75° optional
 Strobe: 1-10 times/second
 Mode: DMX512, self-propelled, master-slave Channel:
 6 DMX channels
 Color Temperature: 3200-6500
 Dimensions: 215×215×310mm
 Net weight: 3KG



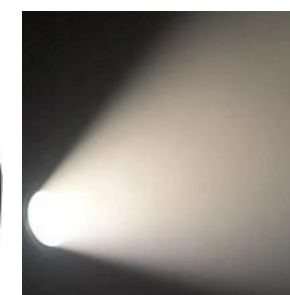
100W WARM WHITE LED COB LIGHT

Voltage: AC110-220V, 50-60Hz
 Power: 100W/200W
 Light source: 100W COB/200W COB
 Color: warm white, white
 Dimming: 0-100%
 Control mode: voice, master and slave, self-propelled,
 DMX512 Channels: 4/8OH
 Working temperature: -30 °C -40 °CSize: 600 x 500 x
 300mm
 Weight: 7KG



LED FRESNEL SPOT LIGHT

Voltage: AC100-240V Power: 150W
 Color temperature: 3200K, 5600K optional Light angle:
 10-60°
 Control signal: DMX512
 Channel: 1CH
 Full cast aluminum housing,
 good heat dissipation To Scope: the stage, conferences,
 photography



LED 200W COB ZOOM FRESNEL SPOTLIGHT

Input Voltage: AC100-240V, 50-60Hz
 Power Consumption: 250WLED
 Quantity: 1PCS 200W cool white or warm white LEDs
 Color Rendering Index: (CRI) Ra≥90
 Zoom angle: 10 ° to 90 •
 Control Signal: DMX512, master-slave, sound, auto
 mode Control Channel: 3/7 DMX512 channels
 N.W: 6.3 KG G.W: 7KG
 Product size: 325*215*450mm



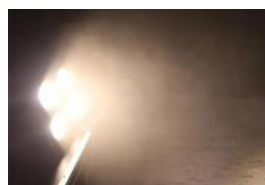
2EYES WARM WHITE COB LED BLINDER LIGHT

Input Voltage:AC100-240V,50/60Hz
 \Power Consumption: 200WLED
 Quantity: 2 x 100W white+ warm white
 Control Signal:DMX512,Master-slave, Sound,Auto
 Control Channel: 4/8/2/6 DMX512 channel
 N.W:3.6KG
 G.W:4.1 KG
 Product Size: 375 x 155 x 200mm
 Packing Size: 410(D) x 215(W) x 260(H)mm



4EYES WARM WHITE COB LED BLINDER LIGHT

Input voltage: AC110V-220V50/60Hz Total power:
 400W
 Light source: 4 COB100W integrated light bulb Light
 angle: reflective cup 35 degrees,
 Control mode: international standard DMX512 /
 master/ slave / manual
 Color temperature: 3200K-5600K adjustable.
 The best projection distance: 15-30m
 Dimming: linear dimming 0-100%
 Strobe: 0-25 times / sec Channel: 8CH
 Weight: 12.5KG
 Product Size: 370 x 370 x 180mm



YES WARM WHITE COB LED WATERPROOF BLINDER LIGHT

Working voltage: A0110V-220V50/60Hz
Power: 450W
Function: Signal control 4/8 international standard DMX512 Channel control, voice control, self-propelled, master-slave synchronization
Waterproof rating: IP5 level
Light source: 4pic 100W super bright high power COB lamp beads(Warm white plus white / white / warm white can choose)
Beam angle: reflective cupFor large stage performances, bars, KTV, wedding and soon



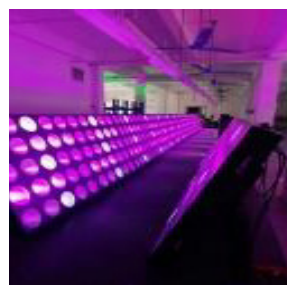
YES WARM WHITE COB LED WATERPROOF BLINDER LIGHT

Working voltage: A0110V-220V50/60Hz
Power: 450W
Function: Signal control 4/8 international standard DMX512 Channel control, voice control, self-propelled, master-slave synchronization
Waterproof rating: IP5 level
Light source: 4pic 100W super bright high power COB lamp beads(Warm white plus white / white / warm white can choose)
Beam angle: reflective cupFor large stage performances, bars, KTV, wedding and soon



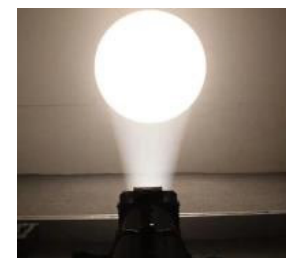
LED STUDIO LIGHT

Voltage: AC100-240V 50-60Hz
Power: 120W
Light source: small power high brightness LED lamp beads (warm white/white optional)
\Beam angle: 60 degrees
Control mode: DMX512 control
Channel: 2CH
Product Size: 548*360*81 mm
Net weight: 4KG



25X10W RGBW 4IN1 LEDS MATRIX LIGHT

Voltage: AC100-240V 50/60Hz
Light source:25x10W RGBW 4 in 1 LEDs DMX channels: 9CH、 105CH
Control Model:Auto running, DMX, sound active, master/slave, pixel control
Light size: 58*58*12CM
Weight:13kg



LED 200W PROFILE SPOT LIGHT

Voltage:AC100-240V, 50/60Hz
Lamp power: 1 pcs of 200W LED
Power consumption:200W
Control channel:2CHDMX512 signal
Small size and less weight
High quality optical system
Different optical lens for choice (19° /26° /36° /50°)



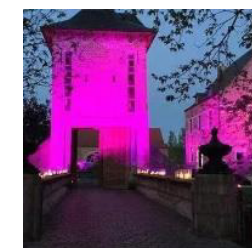
LED 380W FLOW SPOT LIGHT

Voltage: AC90-240V 50-60Hz
Power: 380W
LED Source: 380w led
Life time:50000hours
Projection distance:50-100m
Dimmer:0-100%
Colors:4color+white gobos:2gobo+blank
beam angle :25
Control: manual control,manual cut light,and aperture changes, N.W:38kg
Dimensions:64x28x34cm



LED 120LAMP CITY COLOR LIGHT

Voltage: AC90-240V 50-60Hz
Power: 1200WLED
Source: 120 x 12W RGBW 4in1 leds
Life time:50000H
Dimmer:0-100%
Strobe: 1 -20times/second
Bean angel:40°
Controkstandard DMX512 signal, master-slave, auto-running
DMXchannel:8/16CH
IP Rate:IP55 Effect distance:60m
N.W:38kg
G.W:41kg
Dimensions:650 x 370 x 540mm



LED 180LAMP CITY COLOR LIGHT

Voltage:AC90-140V 50/60Hz
Light source: 180pcs 9W RGB 3in1 LEDs
Beam angle: 15° /25° /45° /60° optional
Dimmer:0-100%
Strobe: 1 -20times/second
Bean angel:40°
Controkstandard DMX512 signal , master-slave,auto-running
Channel: 8(STAGE mode) or 3 (HSV mode) IP grade: IP65
Effect distance: 60m
Size: 730 x 400 x 500mm

LED 60LAMP WALLWASH LIGHT



Light source: 60 10W RGBW4-in-1 leds
 Rated life: 50,000 hours
 Angle: 25°, 45°, 60° optional
 Electrical parameter Input voltage: AC 100V-240V
 50/60Hz Rated power: 600W
 Signal interface: 3-core cannon waterproof signal
 socket input/output
 Power interface: waterproof power socket effect
 Stroboscopic: Fast stroboscopic 1-20Hz per second,
 with pulse stroboscopic, synchronous asynchronous
 stroboscopic effect Dimming: 0-100% linear adjustment
 Light point rotation: the rotation speed is adjustable
 Physical/installation features
 Net weight: 16Kg
 Protection class: IP65
 Dimensions: 570*225*270mm

LED 108LAMP WALLWASH LIGHT



Voltage: AC100-240V 50/60Hz
 Lamp power: LED108pcs 9W 3in1
 Power consumption: 980W
 Control channel: 6CH
 Operation mode: DMX512, master-slave, auto movement
 Display board: digital display
 Protection grade: IP65
 Weight: 21kg
 Size: 550 x 260 x 320mm

LED 54LAMP WALLWASH LIGHT



Voltage: AC100-240V, 50-60Hz
 Power Consumption: 500W LED
 Quantity: 54pcs 9W 3in1 LEDs Control Signal:
 DMX512, Master-slave, Auto mode
 Control Channel: 3/7 DMX512 channels Waterproof
 grade: IP65 N.W: 5.8kg
 G.W: 6.8kg
 Product Dimensions: 330 x 215 x 170mm
 Packing Size: 380(D) x 300(W) x 190(H)mm

1M 24LAMP RGBW 4IN1 WALLWASH



Voltage: AC90-240V 50/60Hz
 Rated power: 80W
 Light source: 24pcs 3W RGB 3in1
 LED Shell: aluminum alloy shell
 DMX channel: 4/8 DMX channels
 IP: IP65 Life: 5-100,000 hours
 Control: DMX512, master from, self
 N.W: 4kg
 Packing: Size: 1040 x 140 x 180mm

1M 18LAMP RGBW 4IN1 WALLWASH



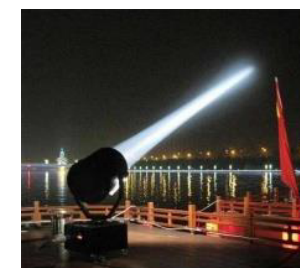
Voltage: AC100-240V 50/60Hz
 Maxi mum power: 216W
 Light source: 18pcs, 4 in 1 lamp beads, each star 12W
 \Beam diver gence angle: 25°, 15°, 45° optional DMX
 channel: 4/8 channel
 Control protocol: USITT DMX-512
 Operating mode: master-slave synchronization, stand-
 alone self-pressed,
 Voice signal input/output
 N.W: 5.5kg
 G.W: 6kg
 Light body size: 990 x 95 x 145mm

1M 12LAMP/14LAMP PIXEL WALL WASHER LIGHT(STROBE BEAM WASH)



Voltage: AC100-240V 50/60Hz Maxi mum power:
 120W
 Light source: 168x0.2w rgb, 168x0.5w cold
 white, 12x3w warm white each star 120W
 DMX channel: 5ch, 7ch, 13ch, 76ch, 87channel
 Function: beam, wash, strobe
 Operating mode: sound test, auto run, dmx 512
 N.W: 4kg
 G.W: 6kg
 Packing size: 106x16x21cm

4000W/5000W SKY LIGHT

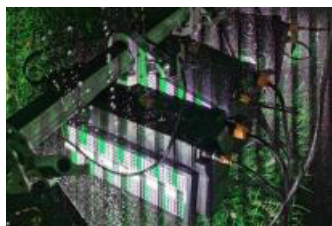


Input voltage: AG220V/50Hz AC380V/60Hz
 Power consumption: 2KW-5KW
 Input current: 5A
 Water proof grade: IP54
 Lamp spec: Xenon lamp 1KW-5KW
 Lamp life expectancy: 1000 hours
 Intensity of electricity resistances .5KV Insulation
 resistance: >2M Q

RGB LED STROBE LIGHT

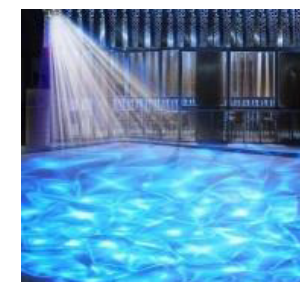


Voltage: AC100~240V 50/60HZ
 Power: 38V / 280W
 Lamp beads: 864pcs 5050 tri-color LED lamp
 beads+96pcs white LED
 Control mode: DMX512, self-propelled, master-slave,
 voice control, with RDM function.
 Channels: CH04, CH11, CH32, CH39 Dimming: 32bit
 0~100% linear dimming
 Features: 8+8 sections of horse racing + dyeing +
 flashing Working temperature: -30 degrees to 50
 degrees
 Strobe frequency: 1~30HZ Appearance: metal, black
 Connection mode: DMX512 input and output / power
 input and output. IP rating: IP20



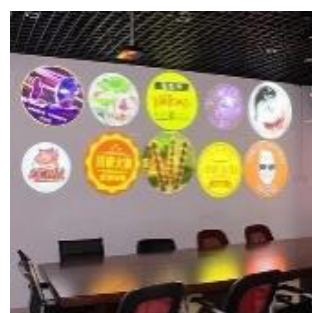
RGB LED MOVINGHEAD STROBE LIGHT

Power Supply
AC110-240V , 50/60Hz
Total power 400W
Light source 960 RGB + W,
Number of segments 12+12 segments Control mode
DMX512, self-propelled, master-slave, voice control,
with RDM function.
channelCH8、CH20、 CH52
Features
Flash + dyeing + effect + shaking head Strobe
frequency 1 ~ 30Hz Appearance metal, black
Connection mode
DMX512 I / O / power I / O.



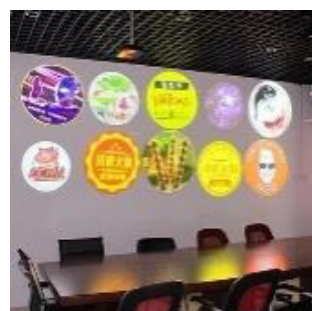
200/300W WATER LIGHT

Rated voltage: AC110V-240V 50-60Hz
Maximum power: 200W/320W
Light source power: 90W/150W/200W/300W LED
(optional)
Lamp bead life: 50000 hours
Bulb color temperature: 6500K-7000K
Light angle: 28° /36° /48° (optional)
Spot shape: round/spliced
square Dimming curve: 0-100%
Channel Mode: 5 Channels
Display mode: LED touch screen digital display
Number of colors: 1 color wheel
(five colors + white light)
adjustable speed rainbow
Effect pattern: 2 pieces of water ripples,
double image variable speed rotation
Focusing function: mechanical adjustment of sharpness
Control mode: international standard DMX512/
manual/master-slave mode control
Working environment: -25° /+35°
Protection class: Ip65
Shell material: die-casting mold + aluminum profile
Lamp body size: 340 x 300 x 360mm
Packing size: 360 x 320 x 380mm
Lamp body net weight: 11 kg



40/60/80W LED GOBO LOGO PROJECTOR LIGHT

Voltage: A0110-220V LED
Power: 40W/60W/80W Luminousflux: 2500
Projection Distance: 10m Color temperature: 6000K
slides Specifications: 37.5/25
Weight: 4.2KG
Size: 250 x 150 x 140mm
Appearance: aluminum alloy shell, table do spraying
or sandblasting process, Black, silver, gray, blue, red
high brightness.Farthest projection distance of upto 20
meters, show a more ornate



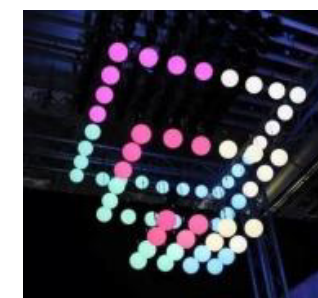
40/60/80W LED GOBO LOGO PROJECTOR LIGHT

Voltage: A0110-220V LED
Power: 40W/60W/80W Luminousflux: 2500
Projection Distance: 10m
Color temperature: 6000K slides
Specifications: 37.5/25
Weight: 4.2KG
Size: 250 x 150 x 140mm
Appearance: aluminum alloy shell, table do spraying or
sandblasting process, Black, silver, gray, blue, red high
brightness. Farthest projection distance of upto 20
meters, show a more ornate



200W OUTDOOR LED GOBO LOGO PROJECTOR LIGHT

Voltage: A0110-220V LED
Power: 200WLuminousflux: 2500
Projection Distance: 10m
Color temperature: 6000K slides
Specifications: 37.5/25 Weight: 4.2KG
Size: 250 x 150 x 140mm
Appearance: aluminum alloy shell, table do spraying
or sandblasting process, Black, silver, gray, blue, red
high brightness,Farthest projection distance of upto 20
meters, show a more ornate



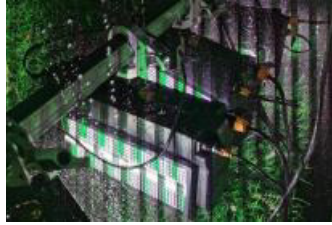
LED LIFT BALL

Voltage: AC100V-240V, 50/60Hz
Lamp power: 252pcs of 5mm LED,
R:84pcs G:84pcs B:84pcs
Power consumption: 45W
Control mode: DMX512,
master-slave, auto movement.sound control
Lifting range: 1.5 meters
(1)diameter: 350mm Size: 385 x 385 x 460mm
N.W:1.75kg G.W:3.5kg
(2) diameter: 250mm Size: 315 x 315 x 530mm
N.W: 1kg G.W:2kg
(3)diameter: 500mm Size: 535 x 535 x 610mm
N.W: 3.5kg G.W: 5.5kg



3D DANCE FLOOR LIGHT

Voltage : AC90-240V, 50/60Hz
Power Consumption: 15W
Light Source : SMD50503IN1LED
Qty:60pcs ; Color: RGB mixing Control: SD
control(remote control optional) 128pcs
controlled by 1 pcs SD controller
Life Span: N30, 000 hours
Housing Color: black
Surface Cover: tempered glass
Switch Power Supply: Built-in
N.W.: 10kg G.W.: 11.6 kg
Carton size: 505 x 505 x 66mm



LED VIDEO DANCE FLOOR LIGHT

Input voltage: AG90-277V
Output voltage: DG15V
Power consumption: 15W
Led QTY:64 pcs 5050 SMD 3 in 1
Refresh rate: 400Hz
Brightness(GD/m): 700 Resolution (L x W): 8x8 Beam
angle: 120°
Life Span: m 100000 hours
Working temperature: -20~ +60°C
Isolating Grade: CLASSE II Surface Board:Tempered
glass
Water proof:IP54/IP67
Supporting weight: 500KG/pc



AVOLITE 2010 DMX CONTROLLER

DMX512/1990 standard, 2048 DMX control channels
Four photoionization independent drive signal output
port, anti 2000VrmsElectric shock.
The independent source signals.
Can control 40 channels up to 240 computer light and
240 light.
Channel allocation.
Can store 512 program.USB memory, can store data
effectly
Packing size: 790 x 680 x 280mm/pcs
N.W:23kg
G.W:36kg



TIGER TOUCH DMX CONTROLLER

4/8 DMX output ports, 2048 DMX channels Support
Artnet, and can be extended to 12 DMX output,6144
channels 10 macro keys, you can edit any program20
playback faders, support for 1000 virtual replayBuilt-
in UPS power supply, power can be powered about
15 minutes,To prevent sudden power failure system
damage or loss of procedures The powerful Titan
system and the layout,Increased the function of the
fine selection, Removed some of the less commonly
used and non- operational operation.After upgrading
the console, So that the lighting division in the pearl
operation on the basis of a quick start.



KING KONG 1024 DMX CONTROLLER

1. Audio signal input
2. MIDI input or output
3. Through the R\$ 232 system interface
4.DMX 512 signal 1024 channel Power supply: 25
V.DC 0.5A
Weight: 13KG
Dimensions: 130 × 483× 488mm
Packing size: 630 × 580 × 230mm



DMX SUNNY 512 CONTROLLER

DMX512 digital output, 512DMX control channel 2
optical isolation independent drive signal output port
controllableMade32 sets of 16-channel computer
lights 1600 chase programstep storage capacity.48
chase procedures per procedure Up to 100 steps.
Each step speed, gradient parameters independent
Set up. Optional music sync or manual rate control
availableWhile running four chase programs, 48 scenes,
andCan also be on the 32 computerlights lantern
operation.Shutdown data remains DMX signal output
connector: XLR-3F × 2 Optional 12V gooseneck work
lights



DMX 240

Voltage: A0110-240V 50-60Hz
Features: 1, 12 SCANNER each SCANNER in Contains
20 channels, divided into A page (1-10) and B page (11
-20) or AB
Page at the same time start; programmable 30 BANK
contained in each BANK8 SCENE; programmable 6
CHASE CHASE programmable 240
Step (ie, 30 BANK SCENE); manually, voice and
automatic 3 modes. 2, in the automatic mode,
Dimensions: 480 x 135 x 70mm
Package size: 600 x 195 x 130mm
N.W: 2.9KG



DMX 512

External power transformer standard DMX512 Signal
MIDI IN/OUT, built-in MIC voice input.
8 channels/192 DMX channel outputs, Controllable 12
scanners (16 channels per channel)
30 software libraries contain 240 preset scenes. Each
group of scenes contains 8 groups of soundscapes 6
programmable preset programs,
any call scenario. Delay time. DMX output polarity
selection.
Supply voltage: DC9V-12V Supply Current: No \
300mA
Product Size: 380x135x70mm
Packing size: 482x 178x73mm



DMX SPILTER

Voltage: AC115V-230V 50Hz
Eight optically isolated DMX signal amplifier to expand
output
Zoom functioncan make.connections extend beyond
the standard length of DMX512If you need additional
location, you can use more than one signal amplifier on
the same connection
Each connection can be independently connected
location, up to 32 light fixture design, solid structure,
reducing the recurrence of the problem

POWER BOX 24WAY



POWER BOX 12WAY



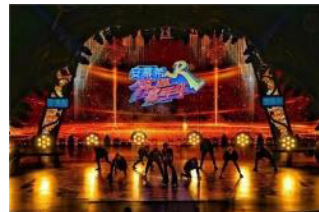
POWER BOX 6WAY



POWER BOX 12WAY

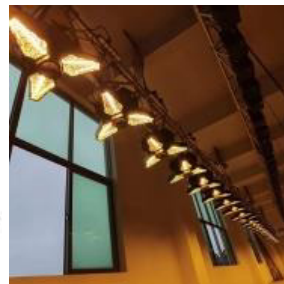


STAGE BACKGROUND LIGHT



Voltage: AC90-240V 50/60Hz
Power: 480W
Light source: 7pcs 60W light + 1008pcs rgb light
Auxiliary light: 168*0.2W(rgb)
Strobe: 1-25times/s with linear dimming
Control: standard DMX512, signal, master-slave, auto-running
Channel: 16/37ch

STAGE BACKGROUND LIGHT



Total Power: 250W
Light source: 3pcs 60W golden light(main), 36pcs 3535 3in1 3W led RGB, 1pc 40W RGBW 4in1 wash beam
led Strobe: 25 times/sec
Dmx channel: 15/20/26CH
Control mode: DMX512, master/slave, auto, sound control
Cooling: silent fan
Applications: DJ, Bar, Nightclub, Clubs, Live show, concerts
Dimming: 0-100% Mechanical Linear dimming
Size: 490*450*230mm
Packing size: 580*540*310mm
N.W: 9.8kg
G.W: 13kg

STAGE BACKGROUND LIGHT



voltage: 110-240V/50-60HZ
Light source: 6 x 60W LED (customized light source)
Maximum power: 360W
Color temperature: 2200K (optional)
Control mode: self-propelled/master-slave online/
DMX512 DMA channel: 1CH/6CH/6CHPixel
Data connection: 3/5 Pin XLR (optional)
Display screen: LCD
Installation method: hanging/installing the base on the ground
Shape: hexagonal
Reflective bowl color: gold
Appearance color: black (standard) /white [customized]

STAGE BACKGROUND LIGHT



Working voltage: 110-240V/50-60HZ
Light source: 7 x 60WLED (custom light source) + 42 x 1W RGBW
Color temperature: 2200K
Control Mode: Self-Propelled /Master- Slave Online/
DMX512DMX channels: 4CH/6CH/28CH/30CH
Data connection: 3/5 Pin XLR (optional)
Display: LCD screen
Installation method: tripod support/hanging/mounting base ground placement
Shape: HexagonalReflector color: silver
Appearance color: black (standard) / white (customized)

MINI 18 LED MOVING HEAD

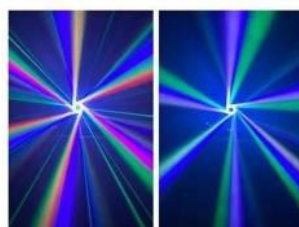


voltage AC90~260V, 50-60 Hz
Power 50W/120W
Lamp 1/3wx18led(R6,G6,B6) Pan 270 degree
Tilt 540 degree Channel 12CHN.W 5KG
G.W 6KG
Size 280x280x370mm
Feature Variable electronic strobe;
Variable electronic dimmer(0-100%)
Vector speed channel for pan/tilt,
RGB color mixing and color macros;
Built-in movement macros via master/
slave or DMX;

MINI 60W MOVING HEAD



Power Consumption: 60W
Voltage: AC90-220V/50-60HZ
Lamp bead: 1*60W RGBW 4IN1 LED lightPan&
tilt: Horizontal scan: 540°, Vertical scan: 270° (16Bits)
Strobe: 1-20t/s, speed adjustable
Control Mode: DMX 512/Auto-run/Master-slave//
Sound/ Strobe Channel: 9CH
Product Size: 19.7*14.7*28.8cmPackage
Size: 29x27x25cm(1pcs); 31x29x54cm(2pcs)
N.W: 3.0kgs
Application: Multi-function hall, KTV, bar, disco, hotel, stage performance, wedding etc.



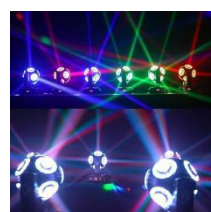
MINI 6EYES BEE MOVING HEAD

Voltage: 90-240V/50-60Hz
Power: 90W LED chip: 6 15W * 4-in 1 RGBW LED chips
Laser: 50MW, 532nm
Lens: aspheric lens Beam angle: 1.5 degrees
Color rotation system: RGBW four-in-one rotation, color Malcolm system Stroboscopic: 1-30 times/second electronic stroboscopic and random stroboscopic
Dimming: 65536 level dimmer
Pan/tilt: translation: 540 degrees/1.5 seconds, tilt: 180 degrees/0.5 seconds
Control mode: DMX512, RDM, stand-alone mode, voice control mode, master-slave mode, DMX512 wireless



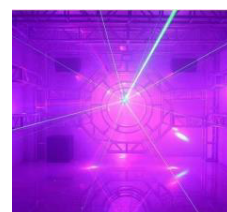
100W MOVINGHEAD

100W LED Beam
2. CH: 12CH
3 Color: 7 color + Blank
4. Gobo: 7 Gobo + Blank
5. Prism: Standard: 8 prism (18 prism optional)
6. Beam angel: 3.8°
7. Beam wide: 80mm



LASER BALL

AC90V-240V 50/60HZ
Total power: 150W
Light source: 8pcs * 12W imported four-in-one Keri lamp beads 5050 R GB strip light, one piece is 12, one lamp 8 pieces A total of 96 pieces 0.2W each Control mode: voice control, self-propelled, DMX512 Applicable places: bars, KTV, small shows and other entertainment



DOUBLE ARMS LASER BALL

AC90V-240V 50/60HZ
Total power: 150W
Light source: 8pcs * 12W imported four-in-one Kervi lamp beads 5050 R GB strip light, one piece is 12, one amp 8 pieces
A total of 96 pieces 0.2W each
Control mode: voice control, self-propelled, DMX512 Applicable places: bars, KTV, small shows and other entertainment venues



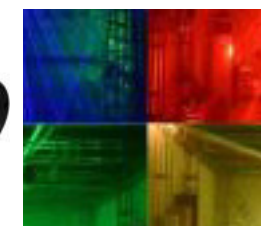
THREE ARMS LASER BALL

AC90V-240V 50/60HZ
Total power: 150W
Light source: 8pcs * 12W imported four-in-one Kerui lamp beads 5050 R GB strip light, one piece is 12, one lamp 8 pieces
A total of 96 pieces 0.2W each
Control mode: voice control, self-propelled, DMX512 Applicable places: bars, KTV, small shows and other entertainment venues
N. W: 5KG



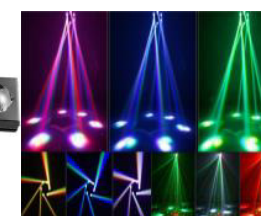
DOUBLE BALL WITH LASER

Technical Parameters
Working voltage: AC95V-245V/50HZ
Product power: 150W
Control mode: international DMX512/13 channels
Working mode: DMX512/master/slave/self-
Bropenedneiho..8-'58% vitra smooth dimming Strobe: 20 times/second 8 15W high brightness light beads
Rotary shaft design, shaking head+360 degrees full coverage
Hexagonallens with outstanding penetration Amber warm light flickers, with safurated and beautiful colors Supports multiple mode adjustments for more stunning results
2 red laser+2 green laser+ amber warm light strobe



FOUR BALL WITH LASER

Technical Parameters
Working voltage: AC95V-245V/50HZ
Product power: 200W
working mode blaxatmaster502473 channels propelled/voice control
Dimming method: 0-100% ultra smooth dimming Strobe: 20 times/second 12 15W high brightness light beads Pyramid exterior design with 360 degree comprehensive coverage
Selected high-quality hexagonal lenses with strong Chantratine bulky image of the old ball lamp Supports multiple mode adjustments for more stunning results
Redlaser+ green laser+blue laser high-frequency output



6HEAD NEW STYLE BEE EYE LIGHT

Input voltage: AC110-230v.50-60Hz rated power 150W, effect: beam color mixing,
light source: 10 10-watt 4-in-1 LED lamp beads +50mw red and green laser,
product ruler: 31cmx31cmx16cm,
control mode: Voice-activated self- propelled DMX512
Weight :7KG
Stroboscope: 20 times/second



4X10W RGBW 4IN1 LED BEAM MOVINGHEAD

Voltage: 90-240V AC, 50/60Hz Power: 120W
Lamp bead specifications: 4 PCS 10w high power RGBW 4 in 1 LED Life: 5000 hours long life, low energy consumption, energy-saving and environmental protection LED Channel ;DMX channel
Stroboscopic: high-speed electronically regulated stroboscopic/random stroboscopic, 1-25 times/second
Operation mode: single-machine mode, controller mode, master/slave synchronous mode
Other features: a variety of built-in programs, super dazzling voice control effect, suitable for bars, KTV, wedding and other entertainment venues.
Outer shell: engineering plastic + aluminum alloy.
packing size: 117X22X17
Weight: 8KG 1 pack 1



6X40W RGBW 4IN1 LED MOVINGHEAD LIGHT

Light source 6 5060
4-in-1 40W
lamp beads 3030 1W 35 5050 0.3W
three-color lampbeads 140
Total power 300W
Channel mode 23CH, 28CH, and 63CH
Control mode: Standard
DMX512 signal protocol, built-in a variety of effect programs, voice control, self-walking, voice control effect is excellent
Built-in RDM512 protocol and more!
Dimming technology: FLICKER FREE 10KHz
dimming refresh PWM strobe, shooting, camera without flicker.Applicable scene:
music festival, bar, clear bar, KTV private room Etc...
Light body size: 50*21.5*30
Inner package size: 54*26*35
Packing size: 56*55*39
Packing: 1 pack 2



2EYES LASER LIGHT

Voltage AC 100-240v
Rated power 30w
Material aluminium alloy
Features high power laser+25 patterns
Product Size 190*80*300mm
Net Weight 2.5KG
Working Mode Sound active ,
Auto play , DMX512



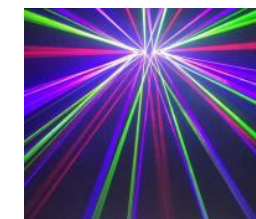
4 EYES LASER LIGHT

Power:AC100-240V 50/60Hz
Laser power:40w
Working environment:indoor (10-35) °
Scanning angle: 30°
Modulation:TTL/ Ang
Control model:DMX512;
sound active; automatic
Control channels:10CHS
Application:
Disco,Bar, DJ club party, KTV; Theater; TV Station



4 EYES LASER LIGHT

Working Voltage:AC100~240V/ 50~60Hz
Laser:500mw
Application:Stage/ Party/ Wedding/ Event
Suitable Occasion:Wedding/ Bar/ KTV/ Private room/
Stage/ Disco/ Club/ Pub/ Family Party
Control Mode:Music, Automatic, Master-Slave, DMX
Weight:3.8kg/pcs
Size:26.5x50x17cm



4 EYES LASER LIGHT

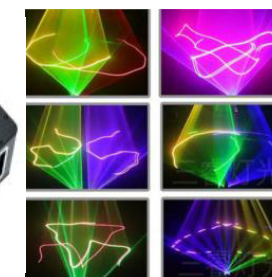
Effect;RGB
7 colors beam laser effect ,main white beam laser
Play mode:Auto,
Sound active,DMX512, Master/slave
Size:520*228*75mm
G.W:6.5KG



6 EYES RED COLOR LASER LIGHT

voltage: AC90-260 - v
Frequency: 50/60 hz
Power: 200 w
Light source: 6 500MW
red
blue
green
laser
Color: red
(other colors are also available for the same price)

Mode: DMX512/ voice/manual/master/slave mode
Features: 6 laser heads can be controlled separately,
the laser output can be controlled separately,
and the Angle can be adjusted separately.
Number of channels: 19
Waterproof grade: IP20
Packing: carton
Package size: 110cm x 30cm x35cm (1 pack 2)
Packing weight: 20kg



6 EYES LASER LIGHT

Power supply: AC100~240V ,50Hz/60Hz
Laser power: RGB 500mw*3
Laser wavelength: Red 638nm
Green 532nm
Blue 450nm
Luminous colors:RGB
Scanning system: new high-speed large-angle
precision motor
Effects: fan effect, wave effect, zoom in and out, dot
effect, flip effect, time tunnel, etc., controlled and
switched by DMX, simple and flexible operation, can
demonstrate more than 51 patterns and beam scanning
performance effects
Power connection: power cord
Signal connection: signal input line/output line
Control channel: 10 DMX-512 signal channels
Control mode:DMX-512 signal control,sound,auto and
master-slave mode
Cooling system: fan forced cooling system
Working environment: indoor
Packing method: carton
Inner box size: 71*32.5*14.5cm
Carton size:73*67.5*33cm (4 PCS/carton)
N.W:5.3KG



LASER 2W RGB

Laser Power2w
[R:500mw 638nm;G:500mw 520nm; B:1w 445nm]
Scanner:15KPPS
Laser level:Class IV
Laser diode type:TTL/analog modulation Scanning angle:up to 60°
Cooling method:integrated aluminum radiator, the whole machine is cold and cooling down Laser spot size:5*6.2mm at the size of the outlet
Laser divergence angle:<1.2mrad(full color)
Control mode:SD (built-in more than 200 effects), sound control, automatic operation, DMX 18/27 channels, master/slave mode, ILDA softwarecontrol
Back control:AT-S2 digital display, 3 stitches 512 in/out, DB25 in/output, power input/output, fuse Built-in effects:up to 1000 kinds, including animation, lines, beams, etc.
Working temperature:-10C-45°C
Voltage:100-250VRated power:20W
Application:stage, DJ, event disco, club, bar, etc.
Product Size:19*14*12.5cm/17.5cm (L* W * H) /2kgs



LASER 10W RGB

Laser Power : 10W
Red power &wavelength : 3W : 638nm Green power^wavelength : 3W : 525nm Blue power &wavelength : 4W : 450nm
Scanner:40K
Max angle : 60°
Power supply : AC100-240V, 50/60Hz,350W
Control mode : ILDA、 Autos Music、
DMX Size : 310x290x170mm
Net weight : 14.5kg



LASER 20W/30W RGB

Laser Power: 20W/30W
Red power &wavelength : 638nm : 6W/10W
Green power &wavelength : 525nm : 6W/10W
Blue power ^wavelength : 450nm : 8W/12W
Scanner : DT50
Max angle : 60°
Power supply : AC100-240V, 50/60HZJ000W Control mode : ILDAX Auto
DMX or FB4 Size : 466x541x239mm
Net wieght : 36KG
IP grade : IP65



FOG MACHINE 600W

Voltage: AC110-240V50/60HZ
PowerConsumption: 400W
Pre-heating time: 3-4 minutes
Smokeoutput: 2500cuft/min
Control mode: wire control, remote control, sound-activated
Netweight: 1.95kg Product Size: 27 x 18 x 16 cm

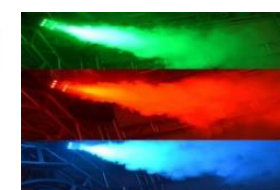


LED 600W FOG MACHINE

Voltage: AC110-240V50/60HZ
PowerConsumption: 400W
Pre-heating time: 3-4 minutes
LightSource:TriLED 1W x 3 pcs
Smokeoutput: 2500cuft/min
Control mode: wire control, remote control, sound-activated
Netweight: 1.6kg
ProductSize: 120 x 150 x 240mm



FOG MACHINE 1200W

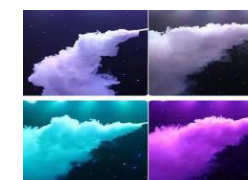


LED 1200W FOG MACHINE



2500W FOG MACHINE

Voltage: AC110-240V50/60Hz
Power Consumption: 2500W Pre-heatingtime: 6-8 minutes
Liquid capacity: 3.2 liters
Smoke output: 30000cuft/min DMX-512
Channel: 7 channels
Control mode: wireless remote control, DMX512 N.W: 19.5kg
ProductSize: 630 x 375 x 350mm



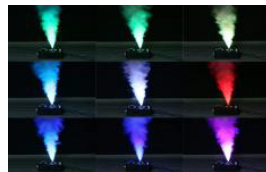
LED 2500W FOG MACHINE

Voltage: AC110-240V50/60Hz
Power Consumption: 2500W
Pre-heatingtime: 6-8 minutes
Liquid capacity: 3.2 liters
Smoke output: 30000cuft/min DMX-512
Channel: 7 channels
Control mode: wireless remote control, DMX512
N.W: 19.5kg
ProductSize: 630 x 375 x 350mm



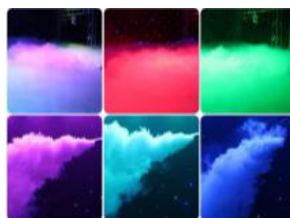
FOG MACHINE 3000W

Voltage: AC110-230V 50-60Hz \pm 10%
 Power: 3000W
 Warm-up time: 12 minutes
 Smoke oil capacity: 10 liters;
 Spray distance: 20 meters
 Smoke cover: 40000cu.ft / min
 Control mode: timing quantitative / DMX512 control
 N.W: 9.2kg
 G.W: 11.3 kg
 Product size: 720 x 280 x 260mm
 Packing size: 740 x 380 x 300mm



LED FOG 1500W UP

Voltage: AC110V-220V50-60HZ
 Power: 150W
 Smokeoutput: 5000cuft/min
 Channel: 5CH
 Warm-up time: 8minutes
 Drum volume: 3.5L
 DMX control: remote control
 LCD display



3000W WATER LOW FOG MACHINE

Input Voltage: AC110-220V 50/60Hz Power: 3000W
 Pre-heating time: 8 minutes
 Capacity of oil tank: 1.0L
 Water Tank capacity: 10L
 Oil consumption rate: 5min/L Operation
 modes: DMX512/Controller: support/LCD Wireless
 controller: optional
 N.W/G.W: 30kg/43kg
 Packaging size: 91*40*48cm



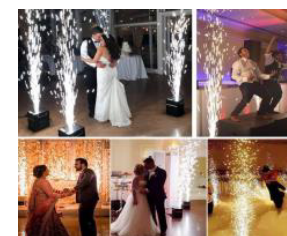
DRY ICE MACHINE

Voltage: AC100-240V 50/60Hz
 Power: 3500W
 Minimum heating time: 10min
 Electronic temperature control: 75°C-85°C
 Water consumption: 10L (reaching the water line)
 Maximum continuous output duration: 3min
 Maximum coverage area: about 100-150m
 Net weight: 10.5KG
 Gross weight: 11 KG
 Machine size: 45 x 26 x 24cm
 Packing size: 49 x 45 x 46.5cm

HAZE MACHINE



HAZE MACHINE



FOG MACHINE 3000W

Input parameters: AC200-240V, 50/60Hz
 Working power: 600W
 Operating temperature: -10 °C ~ 50 °C
 Chassis material flame retardant ABS
 The height of the spray is 2.5 meters in normal and 3.5 meters in speed.
 Support high- end fast-fire interface type double DMX interface, Dual AC power interface
 Weight: 4.5kg
 Size: 168 x 180 x 228mm

CO2 GUN



CO2 MACHINE



CO2 PAPER MACHINE



PAPER MACHINE



SNOW MACHINE



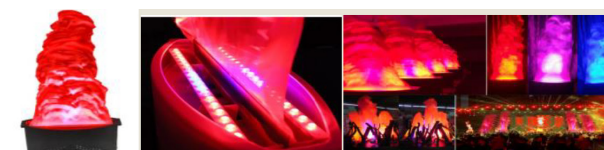
FOAM MACHINE



FIRE MACHINE



FIRE FLAME



FLIGHT CASE



FLIGHT CASE



HAZE WATER



LOW FOG WATER



DJ WATER



SNOW WATER



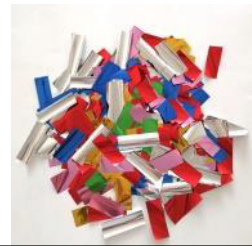
BUBBLE WATER



CONFETTI PAPER SILVER COLOR



CONFETTI PAPER MIX COLOR



CONFETTI PAPER GOLD COLOR



POWER JACK



DMX JACK



SPEAKER JACK



POWER JACK



DMX CABLE 3M



DMX CABLE 5M



POWER CABLE 100M



HEATER



PUMP



PUMP



BEAM LAMP



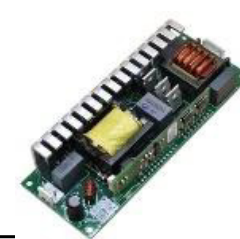
BEAM LAMP



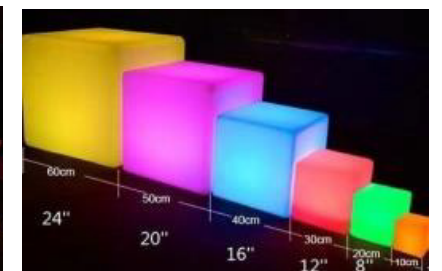
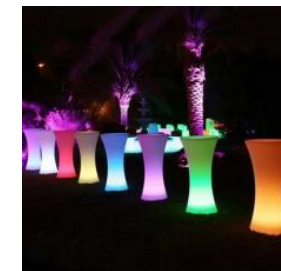
POWER SUPPLY



LAMP POWER



LED CUBE





SRX-712

Frequency division structure: two frequency division
full frequency Bass unit: 12"
Tweeter unit: 1.5"
Input impedance: 8Ohm Continuous power: 300W
Peak power: 600W
Frequency response: 45Hz-20KHz
Sensitivity (1W/1M) : 103
Maximum sound pressure: 115db
Sound reinforcement Angle (H×V) : 100×50 Base:
35mmConnector: 2 x speakon NL 4MP
Net weight Kg: 16
Product specifications (W×H×D) : 349×546×260mm



SRX-715

Frequency division structure: two frequency division
full frequency Bass unit: 15"
Tweeter unit: 1.75" Input impedance: 8Ohm
Continuous power: 400W Peak power: 800W
Frequency response: 38Hz-20KHz
Sensitivity (1W/1M) : 111 Maximum sound pressure:
132Sound reinforcement Angle (H×V) : 90×50 Base:
35mm
Connector: 2 x speakon NL 4MP
Net weight Kg: 29
Product specifications (W×H×D) : 439×711×406mm



SRX-725

Frequency division structure: two frequency division
full frequency Bass unit: 2X15"
Tweeter unit: 1.75" Input impedance: 4Ohm
Continuous power: 800W Peak power:
1200WFrequency response: 38Hz-20KHz Sensitivity
(1W/1M) : 111
Maximum sound pressure: 132
Sound reinforcement Angle (H×V) : 90×50
Base: 35mmConnector: 2 x speakon NL 4MP Net
weight Kg: 56
Product specifications (W×H×D) : 541×1219×508mm



SRX-718S

Frequency division structure: external Bass unit: 18"
Treble unit:Input impedance: 8Ohm
Continuous power: 600W Peak power: 1200W
Frequency response: 39Hz-850Hz
Sensitivity (1W/1M) : 97
Maximum sound pressure: 128
Sound reinforcement Angle (H×V) :Base: 35mm
Connector: 2 x speakon NL 4MP
Net weight Kg: 42
Product specifications (W×H×D) : 561×508×749mm

LINE ARRAY SYSTEM



LINE ARRAY SYSTEM



CA20, CA18, CA08 POWER AMPILFER



8008 MIX



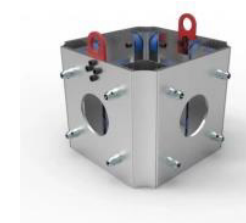
ALUMINUM TRUSS



ALUMINUM TRUSS



MOVING CRONER



MOVING CRONER



WINCH 2TON



TOP



DADO



SAFETY/BASS



3M LIGHT STAND



4M STAND



6M STAND



6M STAND



1.22M*1.22M WOOD STAGE



WOOD STAGE



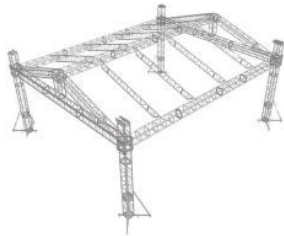
STAGE



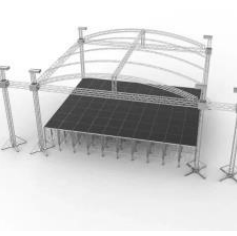
ROUND TRUSS



ROOF STAGE



ROOF STAGE



DOUBLE HANGER



SINGLE HANGER



BIG HANGER



BIG HANGER



BIG HANGER



BIG HANGER



LIGHT CLAMP



LIGHT CLAMP



SPIGOT TRUSS JOINT



SPIGOT TRUSS JOINT



Bleu Ciel

EVENT MANAGMANET
AND MEDIA PRODUCTION

bcevents.ae

Business Center 1, M Floor,
The Meydan Hotel, Nad Al Sheba, Dubai, U.A.E